



Neutron guides for IN1, IN2, IN3 TAS.

Y. Kireenko, P. Konik

20.04.2018



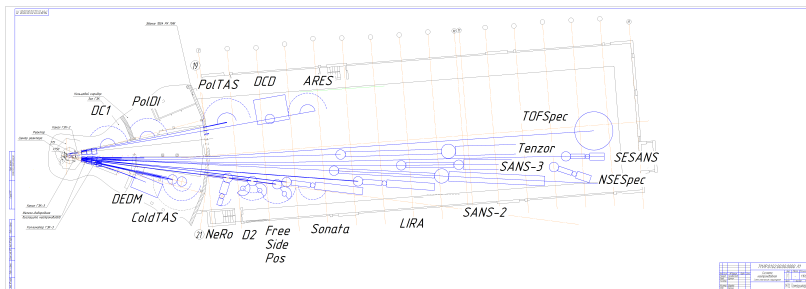
Neutron guides

Rowland focusing

Elliptical nose

Flux

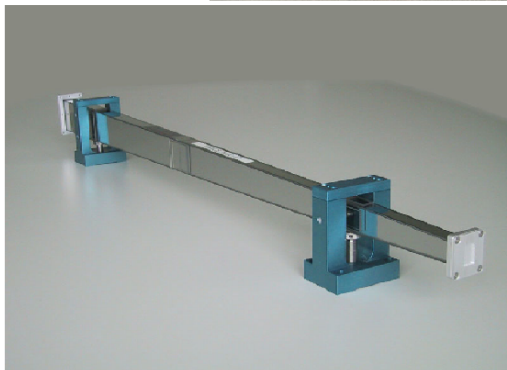
Cold IN-2 and thermal IN-3 TAS

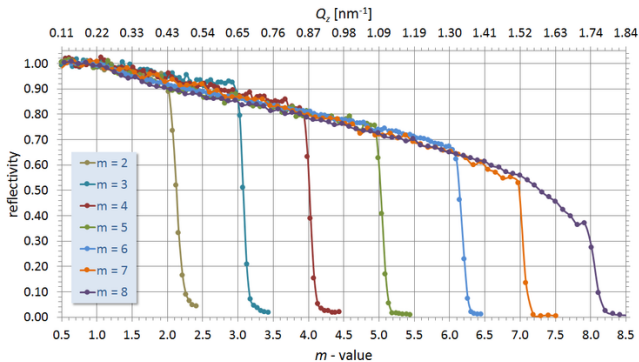


Neutron guides



BL08 @ JPARC
super HRPD guide

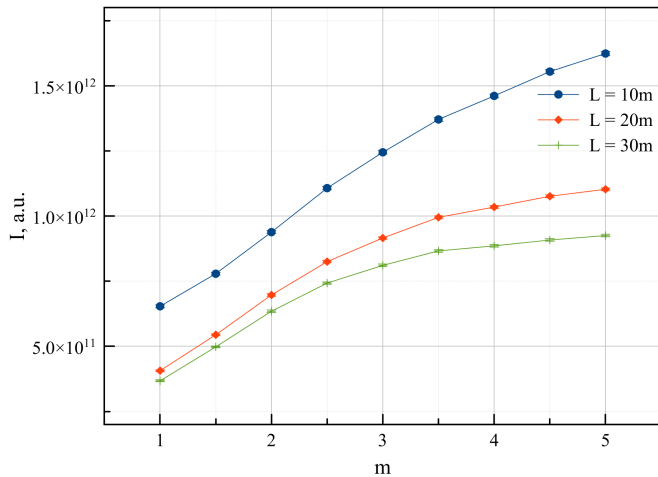


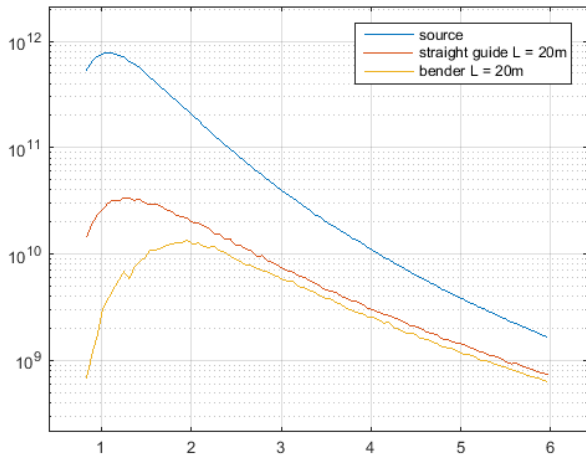


$$\lambda = \frac{4\pi}{Q} \sin(\Theta) \quad (1)$$

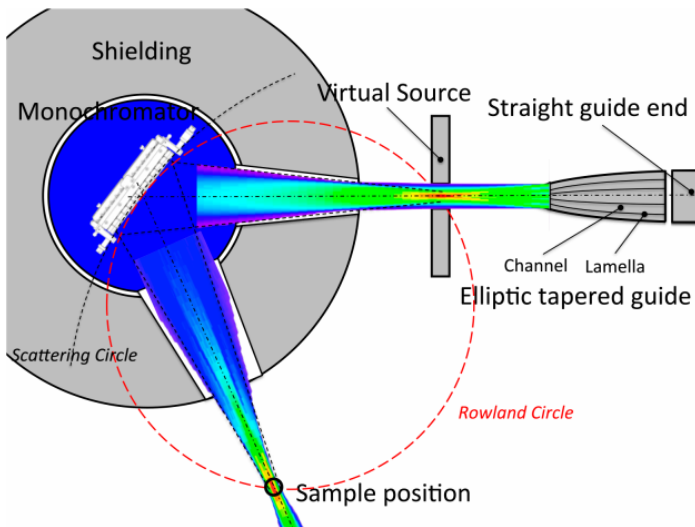


m scan of straight guide



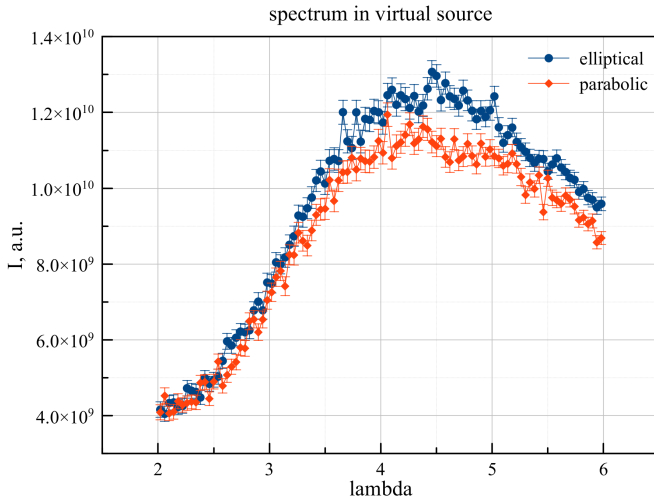


Rowland focusing

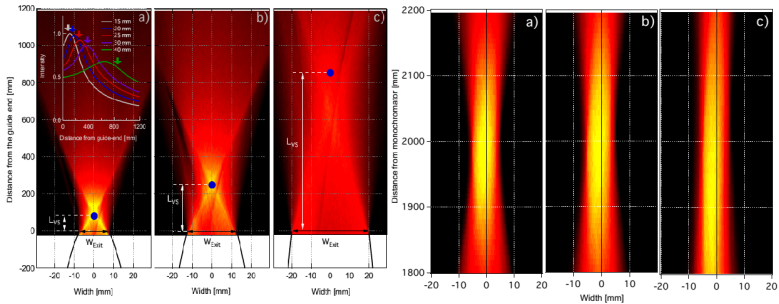


J.Phys.Soc.Jpn. 82 (2013) SA026

Elliptical vs parabolical nose

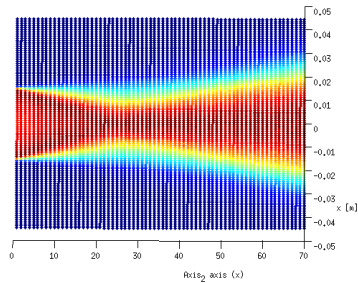
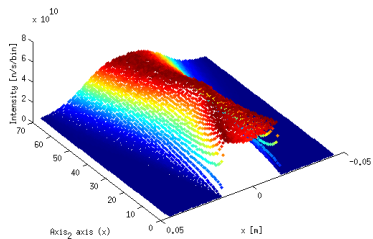


Elliptical focusing



J.Phys.Soc.Jpn. 82 (2013) SA026

Elliptical focusing

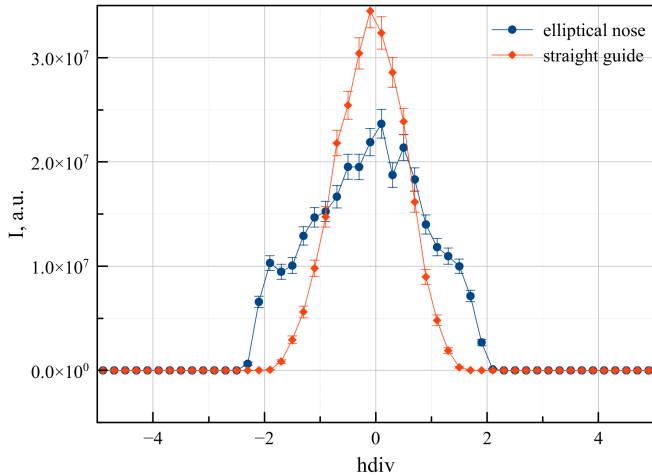


Straight guide vs Elliptical nose

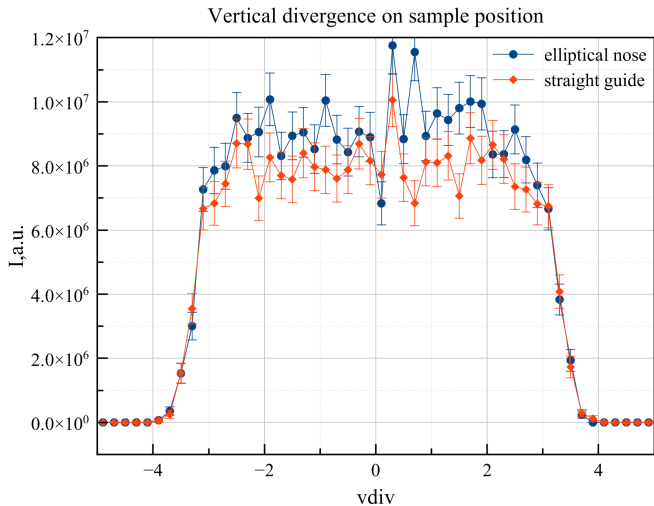


11

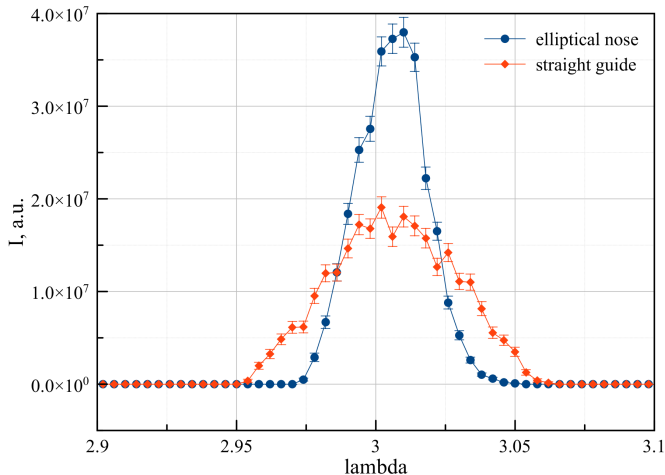
Horizontal divergence on sample position

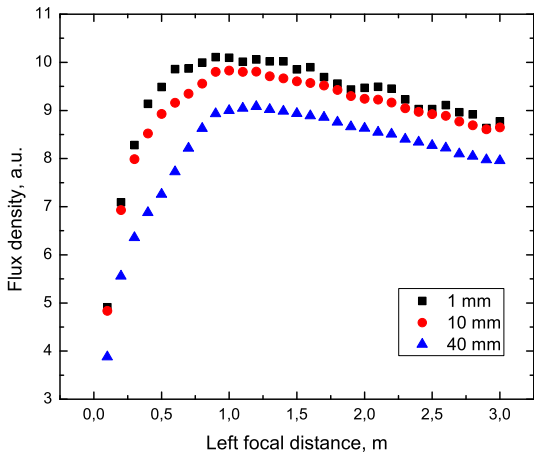


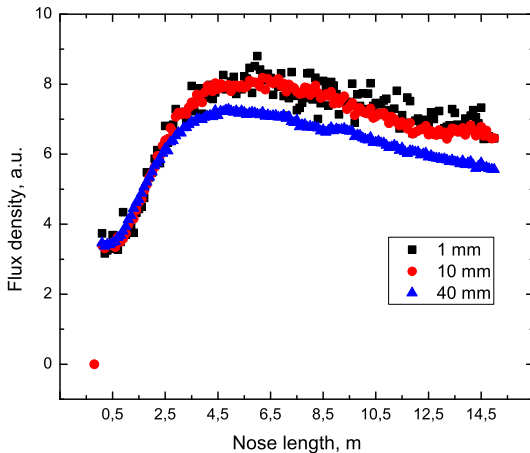
Straight guide vs Elliptical nose

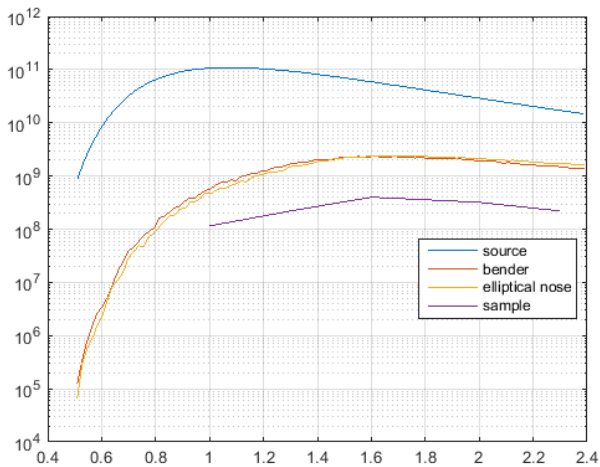


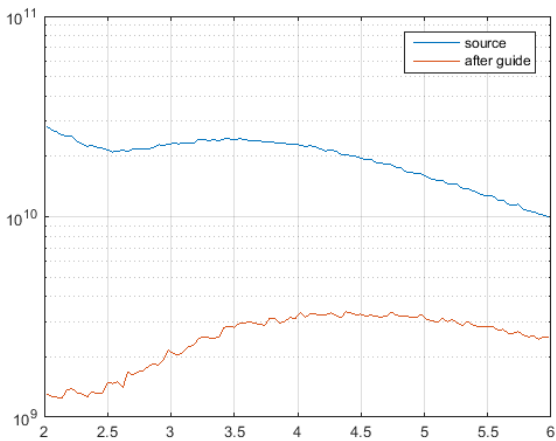
Straight guide vs Elliptical nose













Thank you for your attention!